



*John Paul*  
DESIGNED BY

# WHITE OAK

2059 SHOWN IN TIMBER

#### AVAILABLE SIZES

1780 - 39x56'

2057 - 36x56'

2374 - 41x59'



2 (+ study)

3 (+ study)

3 (+ study)



2.5

2.5

2.5

**Inspire**  
HOMES

## Merging Northwest style with opulent comfort.

This modern, timber frame lodge blends architectural lines and natural materials with its environment, creating a versatile hideaway that pays homage to its surroundings. An inviting porch sweeps up to the entry with a quiet study off to the left, and a spacious kitchen with an adjoining dining room to the right. The master bedroom features a large walk-in closet and double-vanity bathroom. Finally, let a little of the outside in — the picturesque views, the natural daylight, or perhaps the glow of a clear night sky — with the great room's wall of windows. In its design, the White Oak invites you to take a deep breath and realize you can finally relax.

### POPULAR OPTIONS

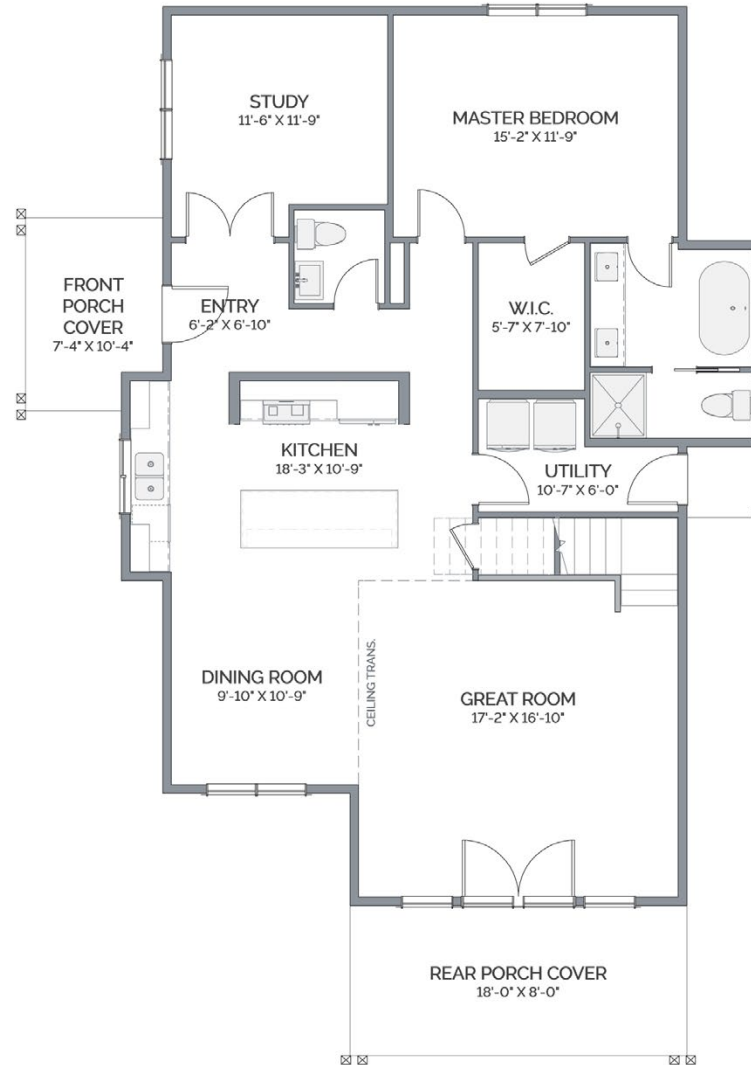
ASK OFFICE FOR CURRENT PRICING

- 2-Car Garage
- Luxury Tiled Shower
- Glass Doors into Study
- Faux Beams

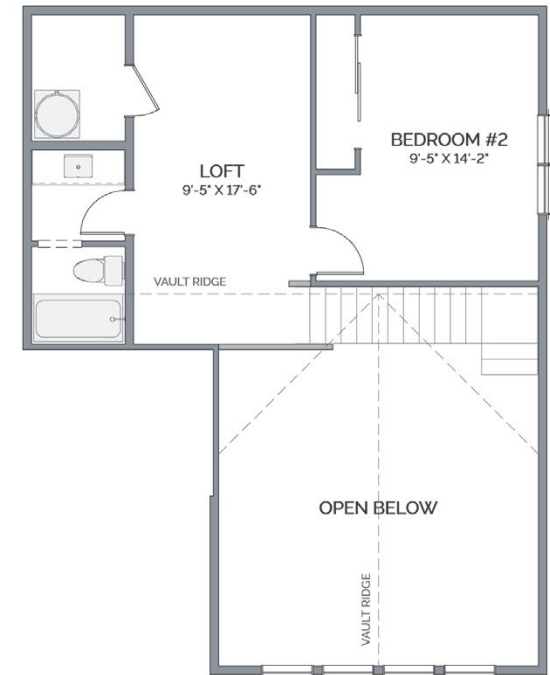


SIDE ELEVATION  
SHOWN IN TIMBER

### MAIN FLOOR 1350 SQ FT



### UPPER FLOOR 430 SQ. FT.



APPROX SQUARE FEET OF LIVING AREA

**1780** WHITE OAK  
39x56'



## Merging Northwest style with opulent comfort.

This modern, timber frame lodge blends architectural lines and natural materials with its environment, creating a versatile hideaway that pays homage to its surroundings. An inviting porch sweeps up to the entry with a quiet study off to the left, and a spacious kitchen with an adjoining dining room to the right. The master bedroom features a large walk-in closet and double-vanity bathroom. Finally, let a little of the outside in — the picturesque views, the natural daylight, or perhaps the glow of a clear night sky – with the great room’s wall of windows. In its design, the White Oak invites you to take a deep breath and realize you can finally relax.

### POPULAR OPTIONS

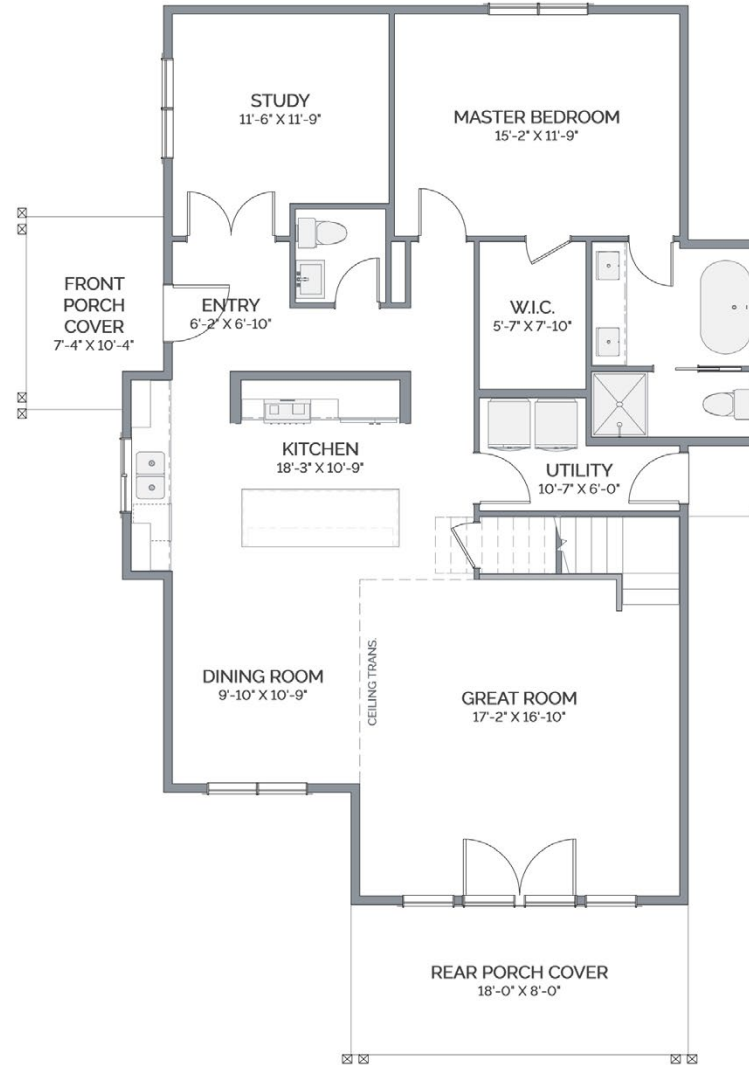
ASK OFFICE FOR CURRENT PRICING

- 2-Car Garage
- Luxury Tiled Shower
- Glass Doors into Study
- Faux Beams

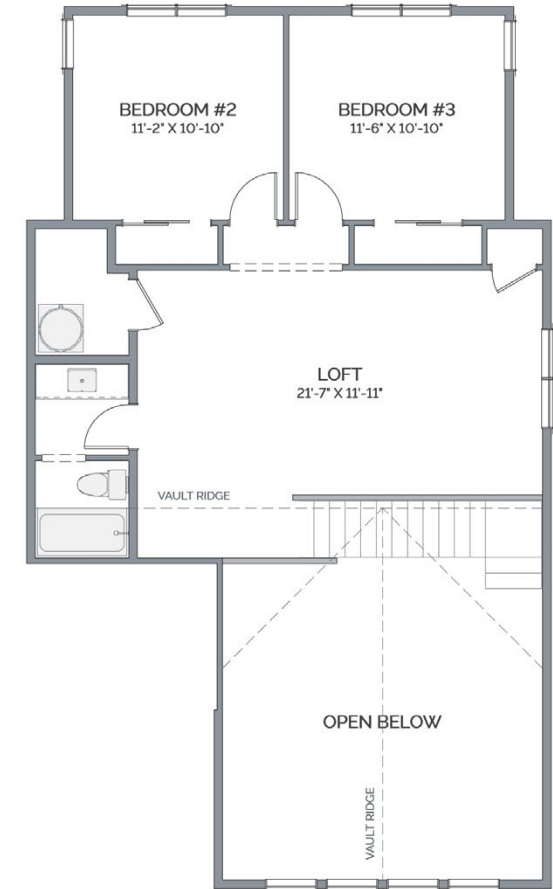


SIDE ELEVATION  
SHOWN IN TIMBER

MAIN FLOOR  
1350 SQ FT



UPPER FLOOR  
707 SQ FT



APPROX SQUARE FEET OF LIVING AREA

2057 WHITE OAK  
39x56'



## Merging Northwest style with opulent comfort.

This modern, timber frame lodge blends architectural lines and natural materials with its environment, creating a versatile hideaway that pays homage to its surroundings. An inviting porch sweeps up to the entry with a quiet study off to the left, and a spacious kitchen with an adjoining dining room to the right. The master bedroom features a large walk-in closet and double-vanity bathroom. Finally, let a little of the outside in — the picturesque views, the natural daylight, or perhaps the glow of a clear night sky — with the great room's wall of windows. In its design, the White Oak invites you to take a deep breath and realize you can finally relax.

### POPULAR OPTIONS

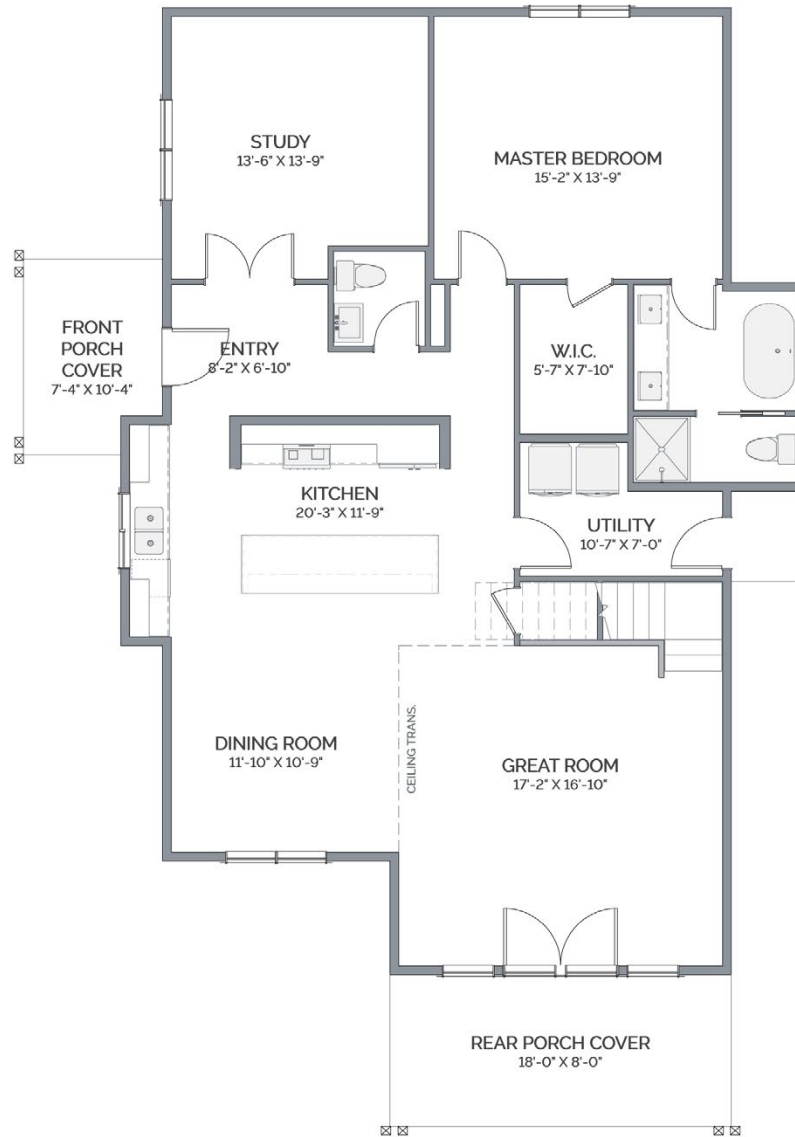
ASK OFFICE FOR CURRENT PRICING

- 2-Car Garage
- Luxury Tiled Shower
- Glass Doors into Study
- Faux Beams

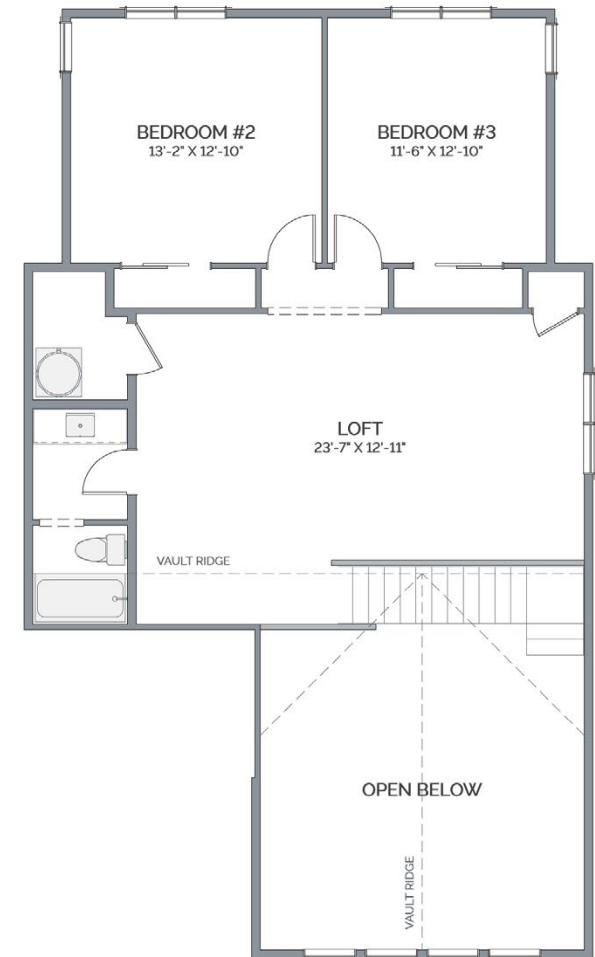


SIDE ELEVATION  
SHOWN IN TIMBER

MAIN FLOOR  
1526 SQ FT



UPPER FLOOR  
848 SQ FT



APPROX SQUARE FEET OF LIVING AREA

**2734** WHITE OAK  
41x59'



LIFETIME WARRANTY



PREMIUM PRODUCTS



ENERGY EFFICIENT



HEALTH & COMFORT