



HOME DESIGN BY

John Paul

Shown in Coastal Prairie Elevation

Blakley | Lot 16



2342 SF - 44'x 78'



3 (+ Den)



3.5



2+

AVAILABLE ELEVATION STYLES

COASTAL TRADITIONAL, COASTAL PRAIRIE (Shown), COASTAL MODERN



www.inspirehomes.com/fidalgovillas



BEACHSIDE RENDERING



BEACHSIDE PATIO SPACE

Inspire
HOMES

Windermere
REAL ESTATE

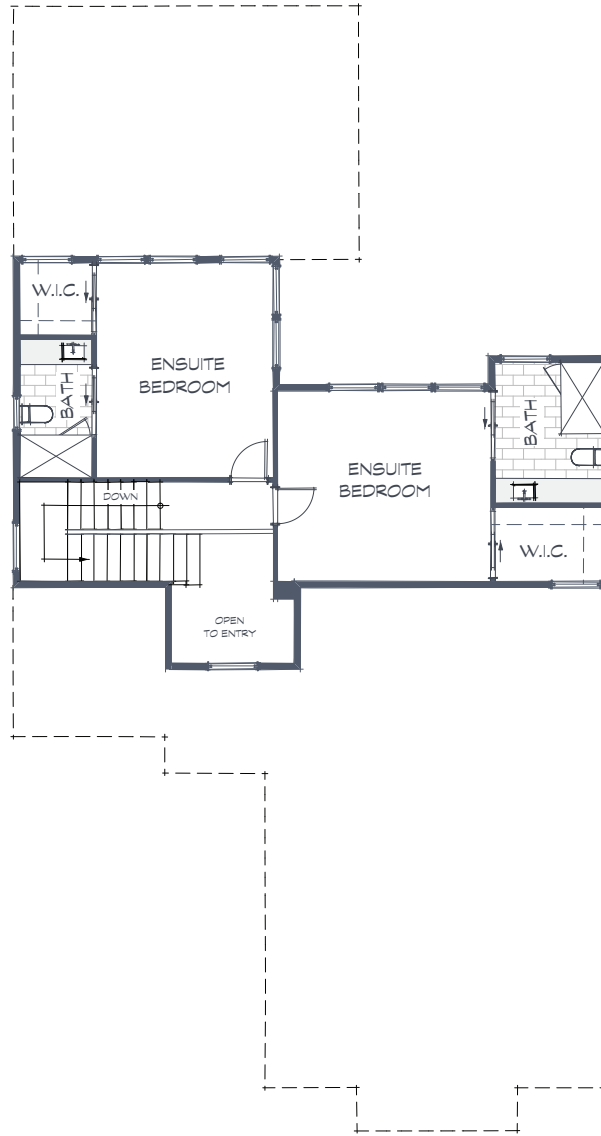
© 2024 Obrock Cox and Associates. All rights reserved. No use of this plan is permitted without the express written permission of both parties. Builder reserves the right to change plans and specifications without notice.

approx square feet of living area

Blakley 2342
44' x 78'



1ST FLOOR PLAN



2ND FLOOR PLAN



Welcome to this remarkable coastal prairie-style home, where you're greeted by an inviting raised entryway that sets the stage for the elegance within. As you step further inside, you'll pass into the spacious Great Room with its impressive raised ceilings, designed to create an open, airy feel while maintaining a cozy, welcoming atmosphere.

Large windows throughout the home frame breathtaking water views, ensuring that nature's beauty is always on display. Whether you're in the Great Room, kitchen, or relaxing by the see-through fireplace that opens to the adjacent patio, the serene waterfront is ever-present, enhancing both indoor and outdoor living experiences.

Upstairs, two ensuite bedrooms offer privacy and comfort, making this two-story home as functional as it is beautiful. With its signature coastal prairie architecture and walls of windows facing the water, this home captures the essence of sophisticated, natural living.

OVERVIEW STANDARD FEATURES

- ▶ Luxury Cabinets
- ▶ Solid Stone or Quartz Surfaces
- ▶ Moen & Kohler Fixtures
- ▶ Bosch Appliances including Refrigerator
- ▶ Seagull Lighting
- ▶ Extreme low-maintenance, high durability, exterior materials
- ▶ Solid-core doors (except closets)
- ▶ Make it your home with selections on materials
- ▶ Some floor plan adjustments allowed

STREET & MARINA

approx square feet of living area

Blakley 2342
44' x 78'

