



HOME DESIGN BY

John Paul

Shown in Coastal Tradition Elevation

Heron | Lot 14



2070 SF - 46'x 74'



3 (+ Den)
Including ADU



3.5



2

AVAILABLE ELEVATION STYLES

COASTAL TRADITIONAL (Shown), COASTAL PRAIRIE, COASTAL MODERN

Fidalgo
VILLAS
www.inspirehomes.com/fidalgovillas



BEACHSIDE RENDERING



COURTYARD RENDERING - GUEST HOUSE



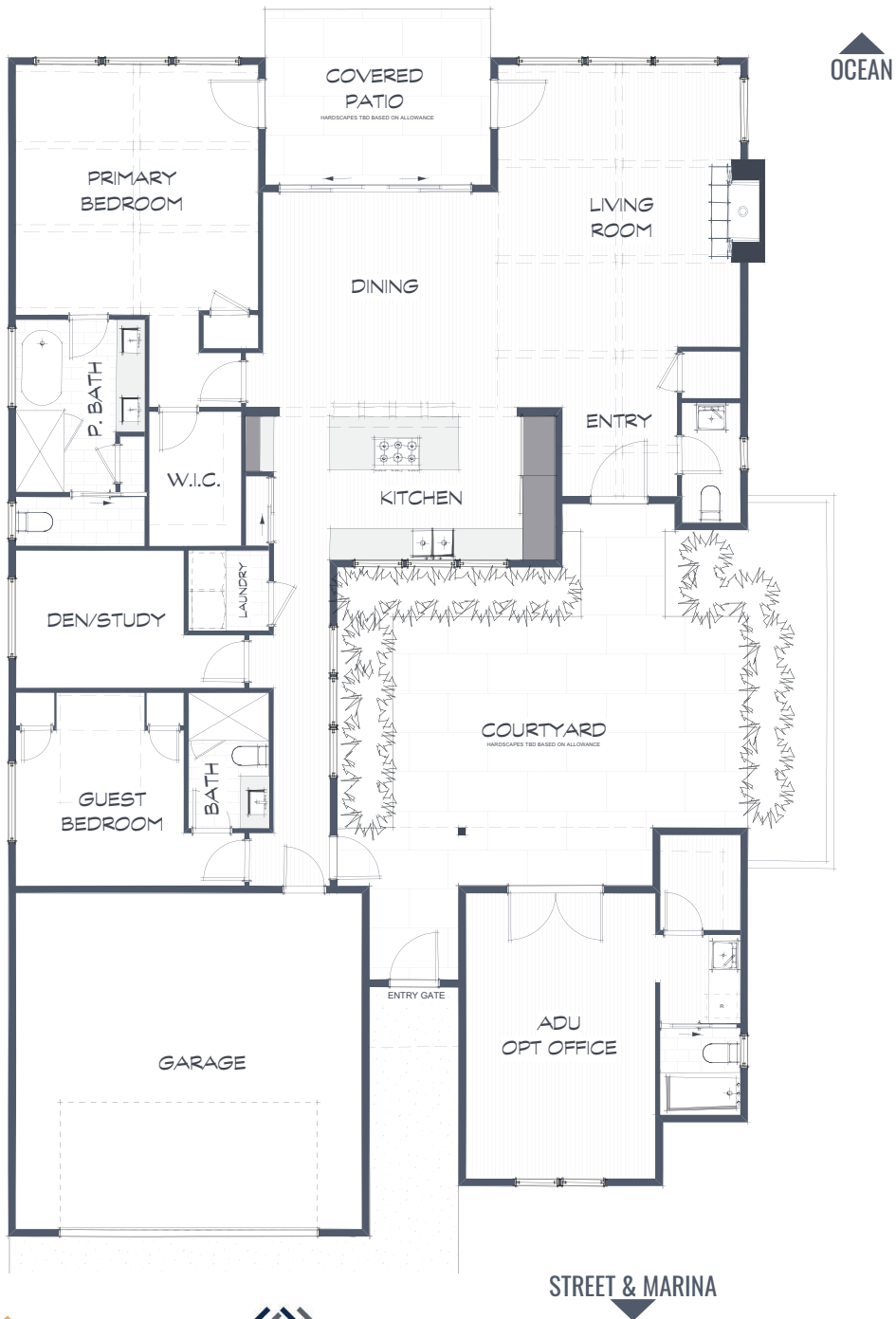
COURTYARD RENDERING - ENTRY DOOR



© 2024 Obrock Cox and Associates. All rights reserved. No use of this plan is permitted without the express written permission of both parties. Builder reserves the right to change plans and specifications without notice.

approx square feet of living area

Heron 2070
46' x 74'



Step into this exquisite residence through an inviting entry courtyard, beautifully defined by a private guest house (ADU), adding a distinctive architectural element to the home's charm. The courtyard, framed by a stunning gate, sets the tone for the elegance that awaits inside. Upon entering the main house, you're greeted by a dramatic vaulted ceiling with exposed beamwork, seamlessly flowing into the expansive Living Room, creating an open and airy ambiance.

Breathtaking views surround the home, offering a stunning backdrop from nearly every room. A private guest wing provides both interior and courtyard access, ensuring comfort and privacy for visitors.

The generously sized Primary Bedroom serves as a peaceful retreat, complete with a covered porch for enjoying the outdoors in comfort. Combining luxury, privacy, and scenic beauty, this home is designed to inspire at every turn.

OVERVIEW STANDARD FEATURES

- ▶ Luxury Cabinets
- ▶ Solid Stone or Quartz Surfaces
- ▶ Moen & Kohler Fixtures
- ▶ Bosch Appliances including Refrigerator
- ▶ Seagull Lighting
- ▶ Extreme low-maintenance, high durability, exterior materials
- ▶ Solid-core doors (except closets)
- ▶ Make it your home with selections on materials
- ▶ Some floor plan adjustments allowed

approx square feet of living area

Heron 2070
46' x 74'

