



John Paul
DESIGNED BY

JUNIPER

SHOWN IN TIMBER FRAME

AVAILABLE SIZES

1612 - 46x58'

3022 - 46x58'



3



2



2

5 (+ study)

3

2

AVAILABLE ELEVATION STYLES

TIMBER FRAME | MODERN FARMHOUSE | TRADITIONAL | COASTAL

Inspire
HOMES



John Paul
DESIGNED BY

JUNIPER

SHOWN IN TIMBER FRAME
BACK ELEVATION

AVAILABLE SIZES

1612 - 46x58'

3022 - 46x58'



3

5 (+ study)



2

3



2

2

AVAILABLE ELEVATION STYLES

TIMBER FRAME | MODERN FARMHOUSE | TRADITIONAL | COASTAL

Inspire
HOMES

A modern design that gives you a little breathing room.

The Juniper's floor plan is all about making sure you don't have to bump elbows. The master bedroom, which features its own bathroom and walk-in closet, is cleverly placed at the rear of the home for maximum space and privacy. The kitchen, with its large center island and spacious pantry, flows beautifully into the open dining and living areas. The Juniper features 10-foot ceilings in the living space, and nine-foot throughout the rest of the home, creating a modern, open design that can complement any lifestyle.

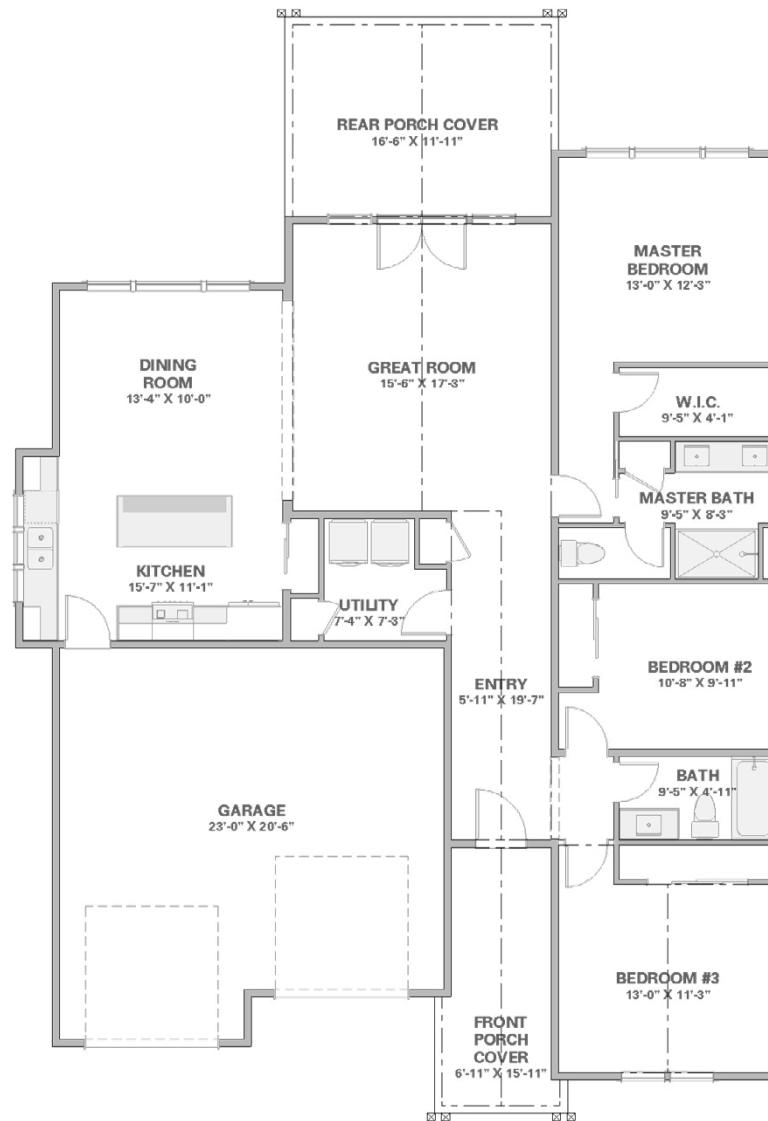
POPULAR OPTIONS

ASK OFFICE FOR CURRENT PRICING

- 3-Car Garage
- Faux Beams
- Luxury Tiled Shower
- Outdoor Kitchen



REAR ELEVATION
SHOWN IN TIMBER FRAME



APPROX SQUARE FEET OF LIVING AREA

1612 JUNIPER
46x58'



A modern design that gives you a little breathing room.

The Juniper's floor plan is all about making sure you don't have to bump elbows. The master bedroom, which features its own bathroom and walk-in closet, is cleverly placed at the rear of the home for maximum space and privacy. The kitchen, with its large center island and spacious pantry, flows beautifully into the open dining and living areas. The Juniper features 10-foot ceilings in the living space, and nine-foot throughout the rest of the home, creating a modern, open design that can complement any lifestyle.

POPULAR OPTIONS

ASK OFFICE FOR CURRENT PRICING

- 3-Car Garage
- Faux Beams
- Luxury Tiled Shower
- Outdoor Kitchen



REAR ELEVATION
SHOWN IN TIMBER FRAME



APPROX SQUARE FEET OF LIVING AREA

3022 JUNIPER
46x58'

