




John Paul
DESIGNED BY

CYPRESS

SHOWN IN MODERN FARMHOUSE

AVAILABLE SIZES
2892 - 80x52'


3 (+ study)


2.5


3

AVAILABLE ELEVATION STYLES
MODERN FARMHOUSE | TRADITIONAL


Inspire
HOMES




John Paul
DESIGNED BY

CYPRESS

SHOWN IN TRADITIONAL

AVAILABLE SIZES
2892 - 80x52'


3 (+ study)


2.5


3

AVAILABLE ELEVATION STYLES
MODERN FARMHOUSE | TRADITIONAL


Inspire
HOMES

MAIN FLOOR
2011 SQ FT
9' CEILINGS

With a master on the main floor and loft space, two bedrooms with a Jack-and-Jill bathroom upstairs, the Cypress is a perfect home for families. The 2,011-sf main floor is open and is centered upon an open great room and kitchen with a large pantry, perfect for entertaining. The home's master bedroom includes a large walk in closet and five-piece ensuite bath. This oversized three-car garage includes additional space for a shop.

POPULAR OPTIONS

ASK OFFICE FOR CURRENT PRICING

- Covered Outdoor Living Space
- Luxury Tiled Shower
- Glass Doors into Study
- Faux Beams
- 4rd Bedroom
- Outdoor Kitchen
- Various Architectural Elevations



REAR ELEVATION
SHOWN IN MODERN FARMHOUSE

APPROX SQUARE FEET OF LIVING AREA

2892 CYPRESS
80x52'



LIFETIME WARRANTY



PREMIUM PRODUCTS

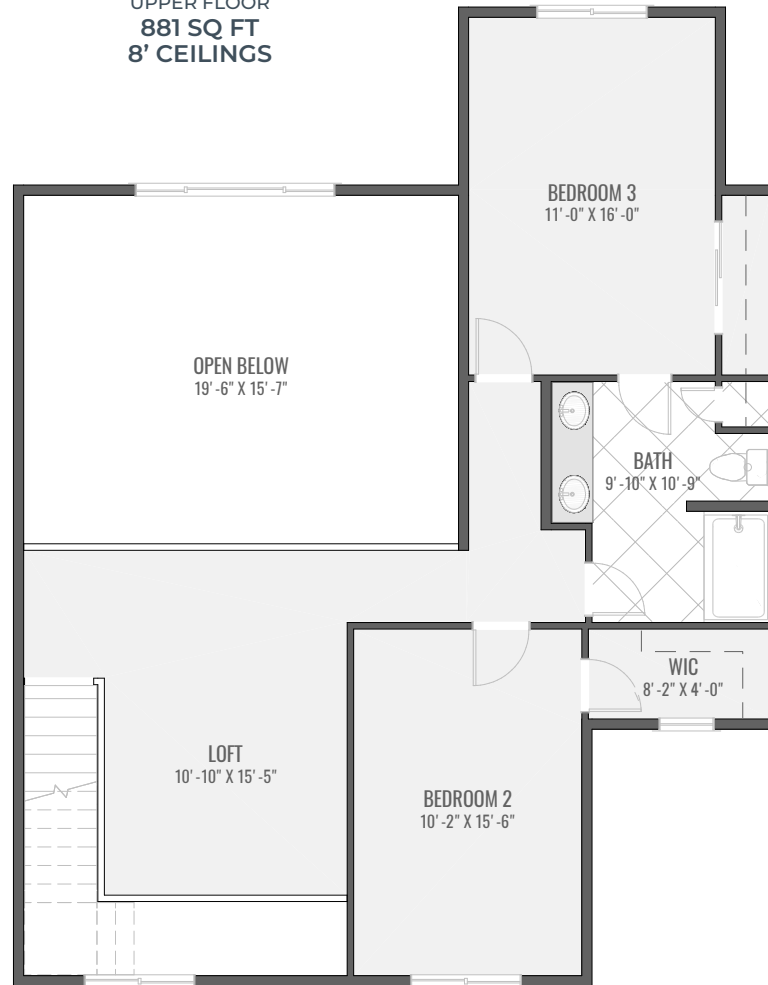


ENERGY EFFICIENT



HEALTH & COMFORT

UPPER FLOOR
881 SQ FT
8' CEILINGS



APPROX SQUARE FEET OF LIVING AREA

2892 CYPRESS
80x52'

