



John Paul
DESIGNED BY

ASPEN

1858 SHOWN IN TIMBER

AVAILABLE SIZES

1715 - 64x74'

1858 - 66x77'

2919 - 66x77'



2 (+ study)

2 (+ study)

4 (+ study)



2

2

3



2

2

2

Inspire
HOMES

You enter this home through a spacious entry with high vaulted ceilings that continue into the living room and rear porch cover. With options to build a 1715, 1858 or 2919 square foot home, the Aspen is laid out efficiently and makes good use of any sized lot. The large master bathroom features his and hers sinks, and a large walk-in closet. The kitchen opens into the dining space and has views of your property's side yard. The Aspen offers you the option for a three-car garage, providing ample space for storage and hobbies.

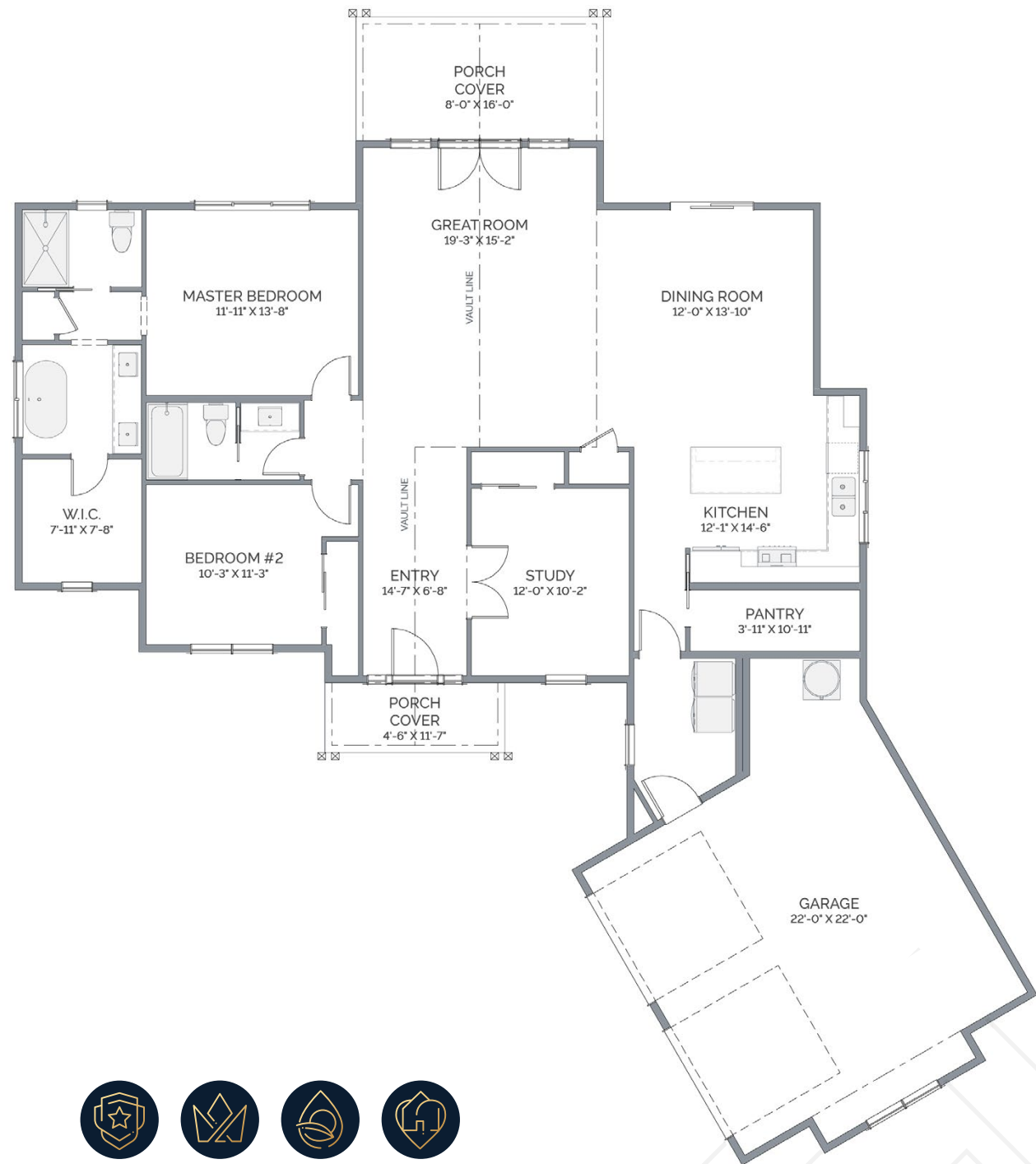
POPULAR OPTIONS

ASK OFFICE FOR CURRENT PRICING

- Luxury Tiled Shower
- Glass Doors into Study
- Faux Beams
- 3rd Bedroom with Closet in Study
- Outdoor Kitchen
- 3-Car Garage



REAR ELEVATION



APPROX SQUARE FEET OF LIVING AREA

1715 ASPEN
66x74'



LIFETIME
WARRANTY



PREMIUM
PRODUCTS



ENERGY
EFFICIENT



HEALTH &
COMFORT

You enter this home through a spacious entry with high vaulted ceilings that continue into the living room and rear porch cover. With options to build a 1715, 1858 or 2919 square foot home, the Aspen is laid out efficiently and makes good use of any sized lot. The large master bathroom features his and hers sinks, and a large walk-in closet. The kitchen opens into the dining space and has views of your property's side yard. The Aspen offers you the option for a three-car garage, providing ample space for storage and hobbies.

POPULAR OPTIONS

ASK OFFICE FOR CURRENT PRICING

- Luxury Tiled Shower
- Glass Doors into Study
- Faux Beams
- 3rd Bedroom with Closet in Study
- Outdoor Kitchen
- 3-Car Garage



REAR ELEVATION



APPROX SQUARE FEET OF LIVING AREA

1858 ASPEN
66x77'



LIFETIME
WARRANTY



PREMIUM
PRODUCTS



ENERGY
EFFICIENT



HEALTH &
COMFORT

You enter this home through a spacious entry with high vaulted ceilings that continue into the living room and rear porch cover. With options to build a 1715, 1858 or 2919 square foot home, the Aspen is laid out efficiently and makes good use of any sized lot. The large master bathroom features his and hers sinks, and a large walk-in closet. The kitchen opens into the dining space and has views of your property's side yard. The Aspen offers you the option for a three-car garage, providing ample space for storage and hobbies.

POPULAR OPTIONS

ASK OFFICE FOR CURRENT PRICING

- Luxury Tiled Shower
- Glass Doors into Study
- Faux Beams
- 5rd Bedroom with Closet in Study
- Outdoor Kitchen
- 3-Car Garage



REAR ELEVATION



APPROX SQUARE FEET OF LIVING AREA

2919 ASPEN
66x77'

